

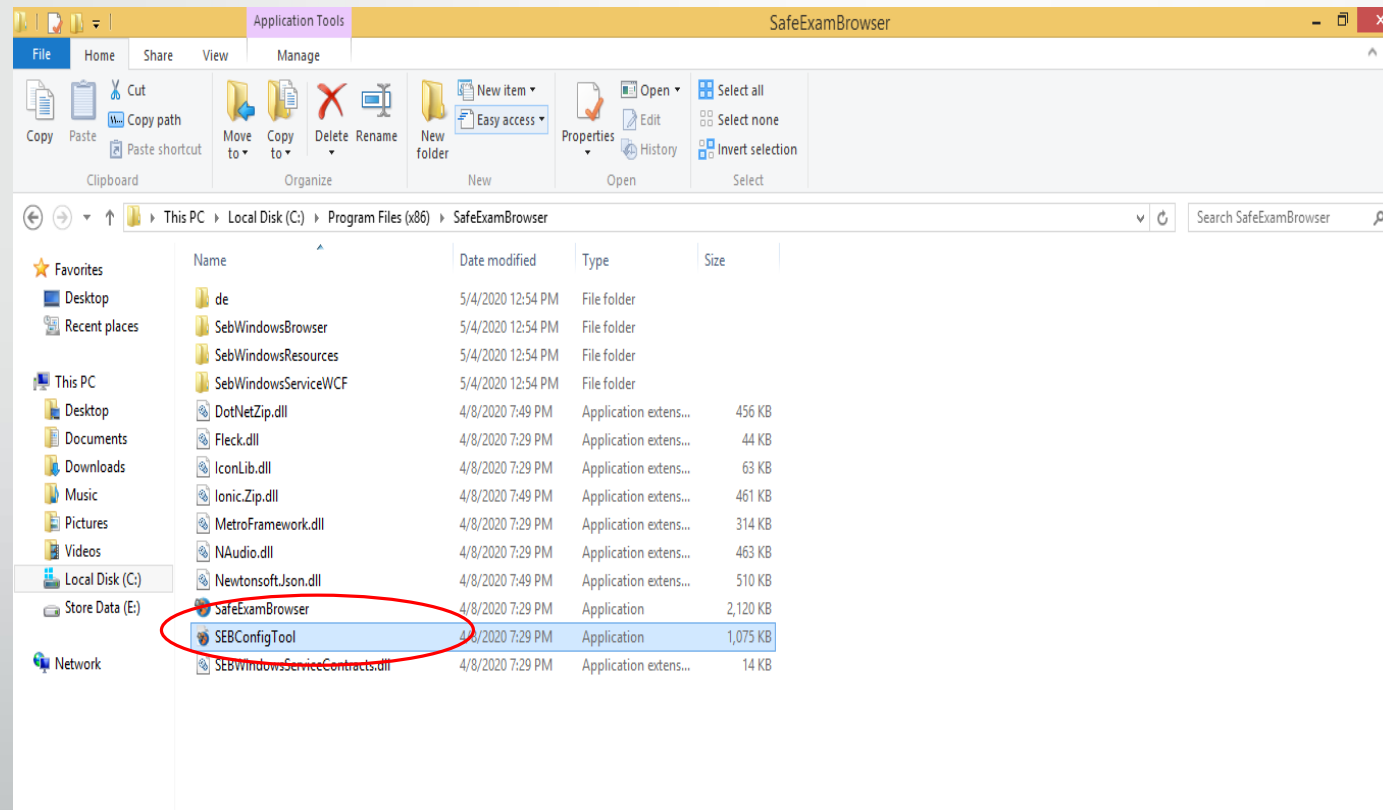


Safe Exam Browser installation and Configuration

Safe Exam Browser Configuration

- This is the second part which illustrate the safe exam browser configuration

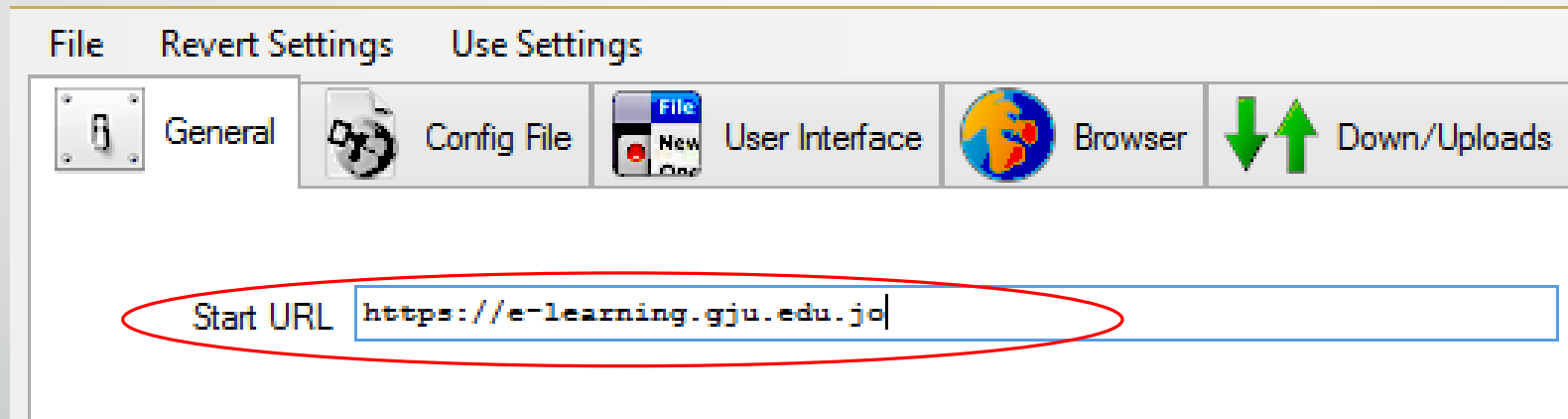
➤ Step #1: Open C drive → program files (X86) folder → double click on safe exam browser folder → Double click on SEB Config tool



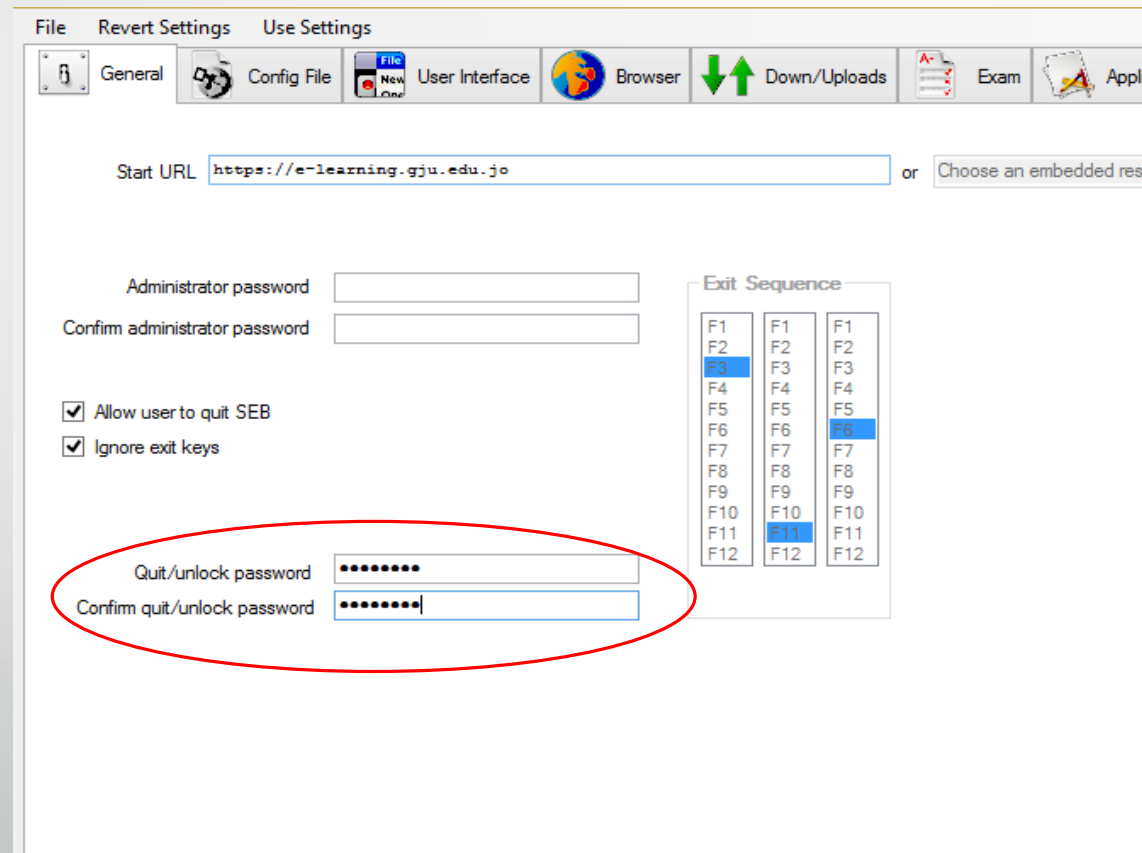
➤ Step #2:

In the general tab write the URL that contains the exam in start URL field.

(i.e. <https://e-learning.gju.edu.jo>)



- Step #3: In the field of Quit/unlock password enter any password (i.e. Gju@2020)



The screenshot shows the SEB configuration window with the following elements:

- Start URL: `https://e-learning.gju.edu.jo`
- Administrator password: [Empty field]
- Confirm administrator password: [Empty field]
- Checkboxes: Allow user to quit SEB, Ignore exit keys
- Quit/unlock password: [Masked field with 8 dots]
- Confirm quit/unlock password: [Masked field with 8 dots]
- Exit Sequence table:

Exit Sequence		
F1	F1	F1
F2	F2	F2
F3	F3	F3
F4	F4	F4
F5	F5	F5
F6	F6	F6
F7	F7	F7
F8	F8	F8
F9	F9	F9
F10	F10	F10
F11	F11	F11
F12	F12	F12

- Note that this step is important to ensure that the student can not close the safe exam browser before finishing the exam.
- The password must be provided to the students by the following method:
(minimum 15 minutes after the beginning time of the exam)

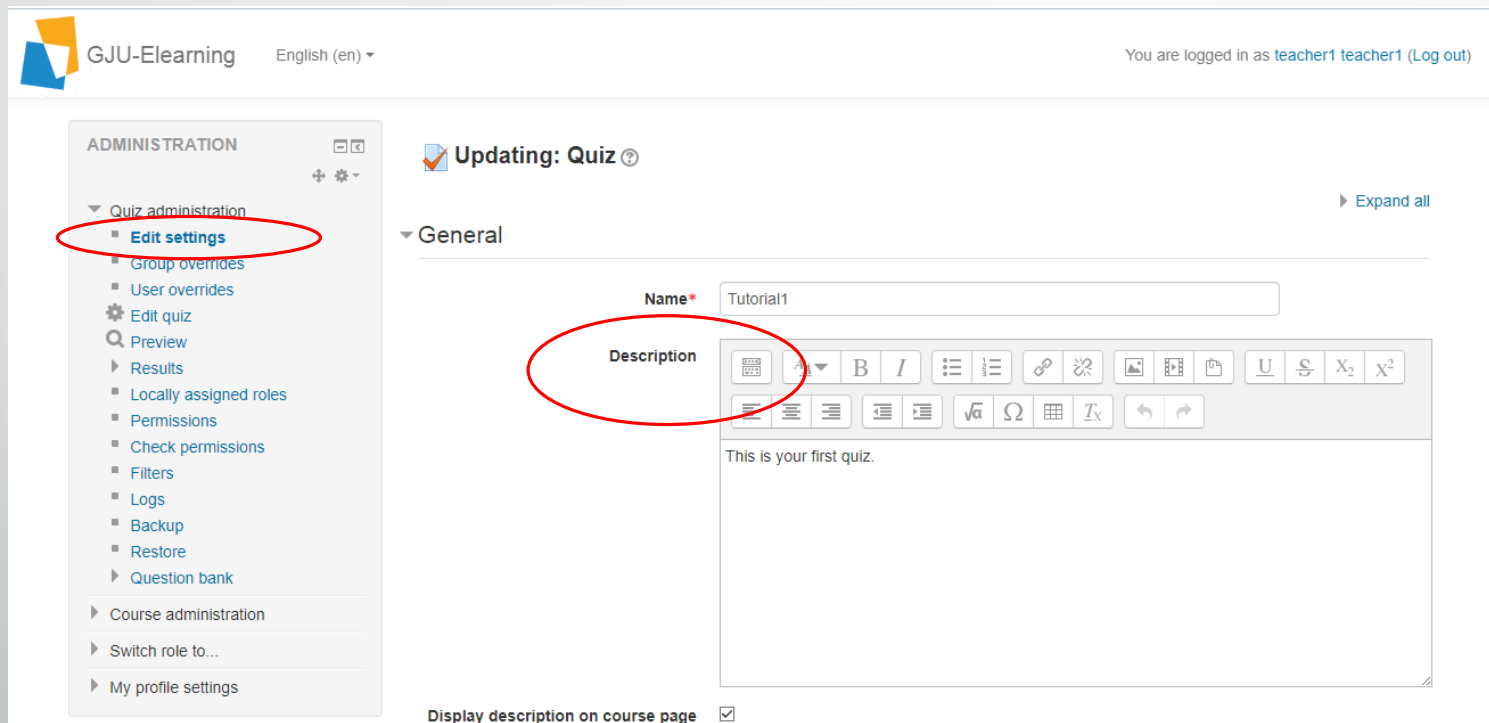


1. Log in to your e-learning portal account (i.e. teacher1 account)

A screenshot of a web browser showing the login page for GJU-Elearning. The browser's address bar displays "e-learning.gju.edu.jo/login/index.php". The page header includes the GJU-Elearning logo and a language dropdown menu set to "English (en)". The main content area features a login form with the following elements:

- A "Username" label followed by a text input field containing "teacher1".
- A "Password" label followed by a password input field with masked characters ".....".
- A checkbox labeled "Remember username" which is currently unchecked.
- A blue "Log in" button.
- An orange message: "Please enter your GJU Email credentials to login".
- An orange message: "Cookies must be enabled in your browser" with a help icon.
- A blue "Log in as a guest" button.

2. Double click on the course exam \longrightarrow Edit setting \longrightarrow In the description field write (The quit/Unlock password is(Same as the one you chose in SEB config tool i.e. Gju@2020)



The screenshot shows the GJU-Elearning interface. The top navigation bar includes the GJU logo, the text "GJU-Elearning", the language "English (en)", and the user information "You are logged in as teacher1 teacher1 (Log out)".

The left sidebar is titled "ADMINISTRATION" and contains a list of options. The "Quiz administration" section is expanded, and the "Edit settings" option is circled in red.

The main content area is titled "Updating: Quiz" and shows the "General" settings for a quiz. The "Name" field is set to "Tutorial1". The "Description" field is circled in red and contains the text "This is your first quiz." The description field has a rich text editor toolbar above it with various formatting options.

At the bottom of the main content area, there is a checkbox labeled "Display description on course page" which is checked.

3. Press save and display then log out

You are logged in as **teacher1 teacher1** (Log out)

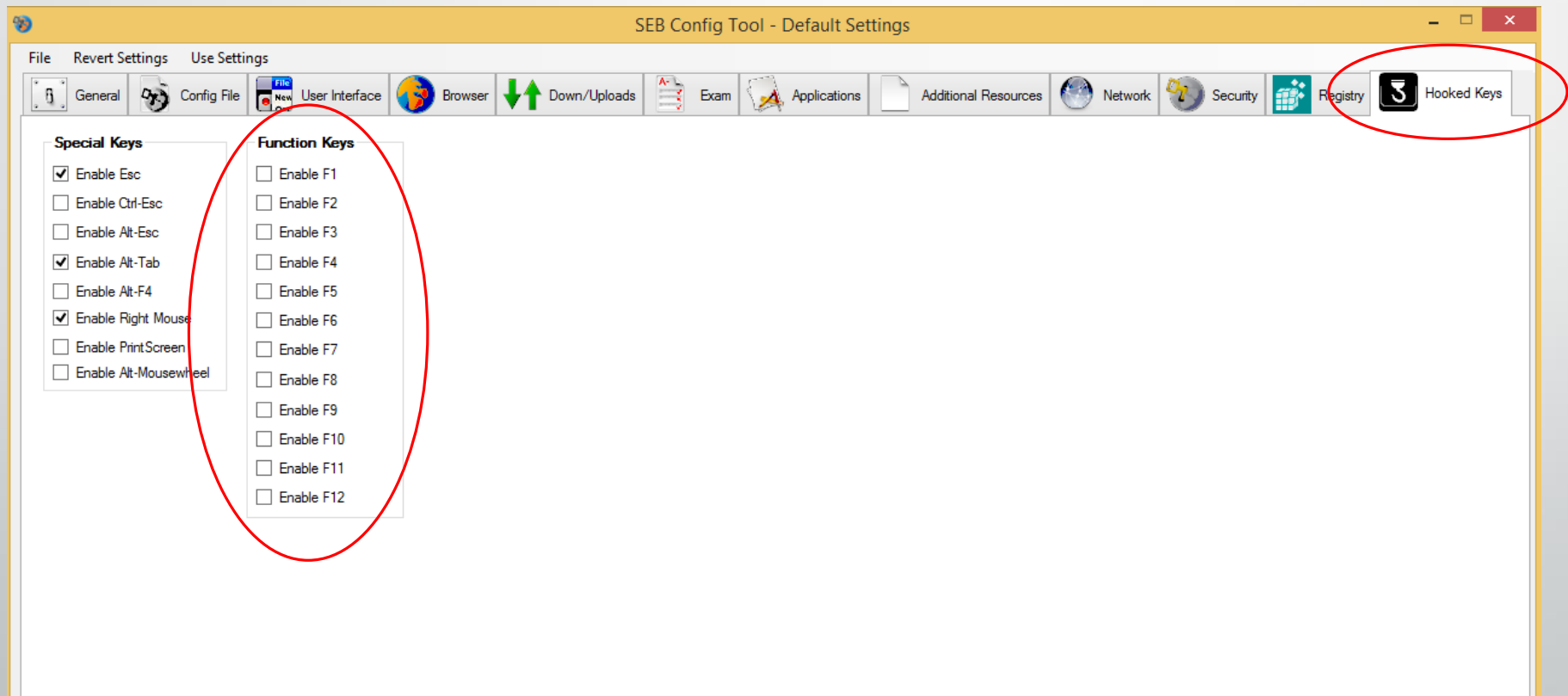
- ▶ Review options ⓘ
- ▶ Appearance
- ▶ Extra restrictions on attempts
- ▶ Overall feedback ⓘ
- ▶ Common module settings

Save and return to course Save and display Cancel

These are required fields in this form module *

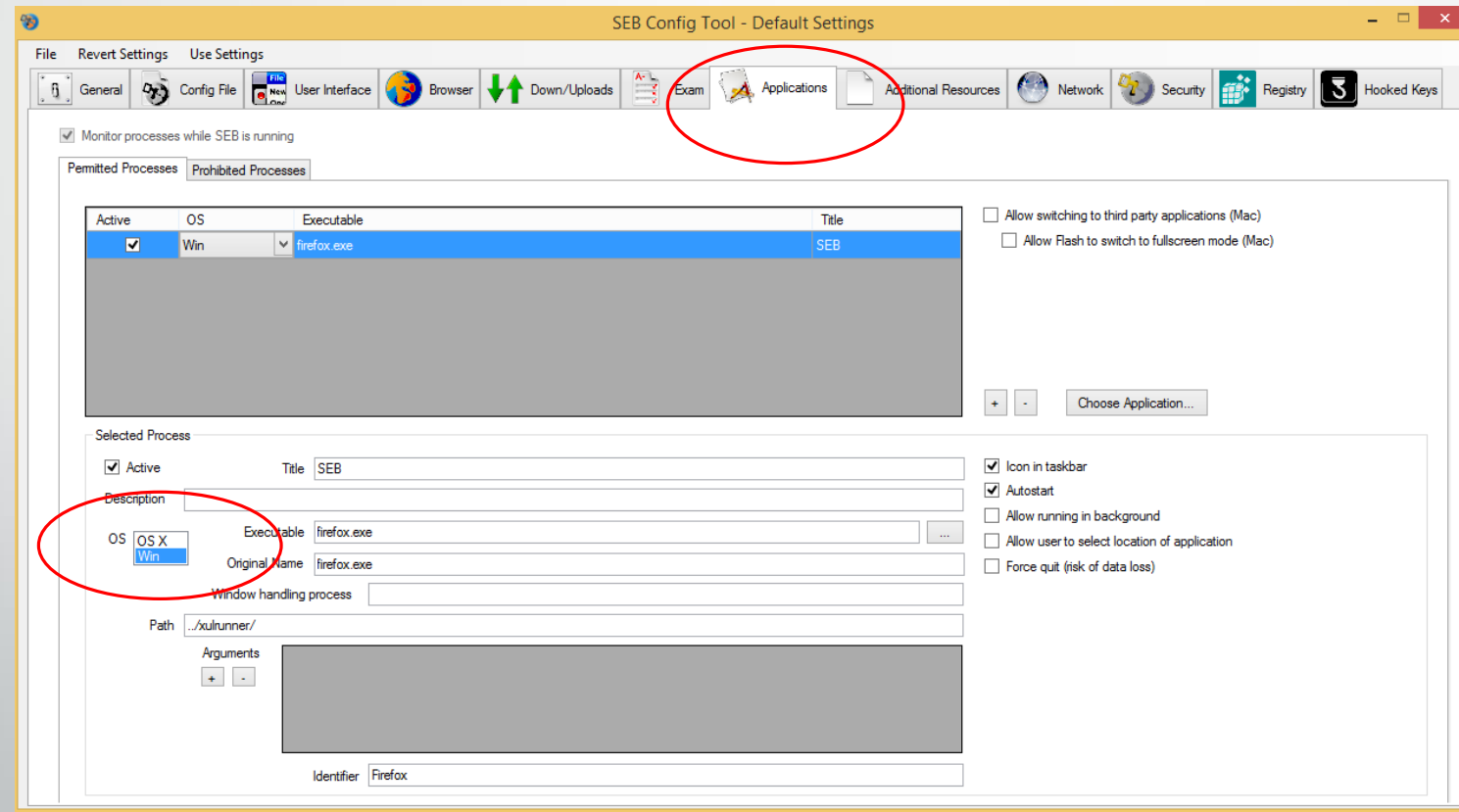
➤ Step #4:

Return to the SEB config tool file go to Hooked key tab and disable all function keys.

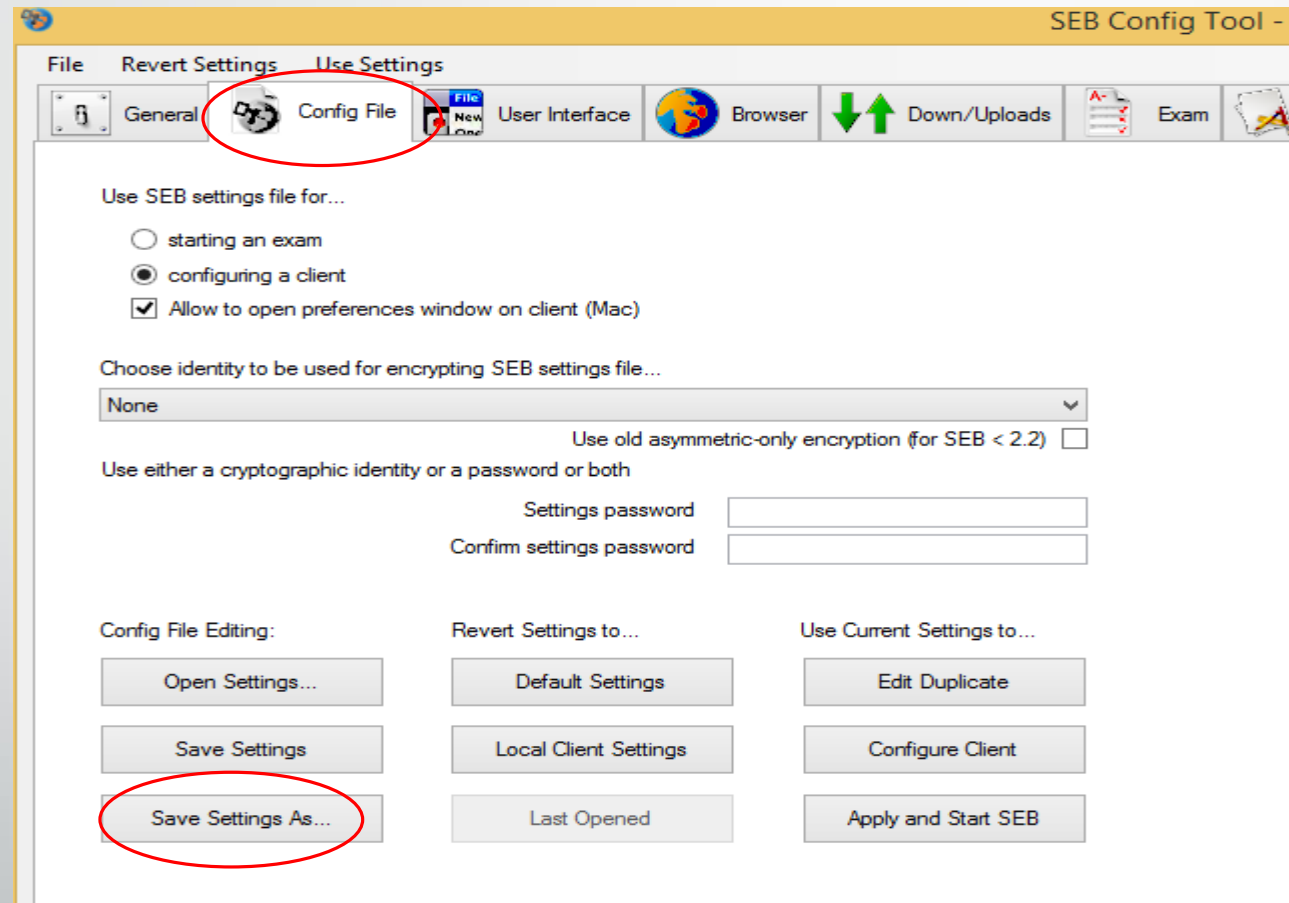


➤ Step #5:

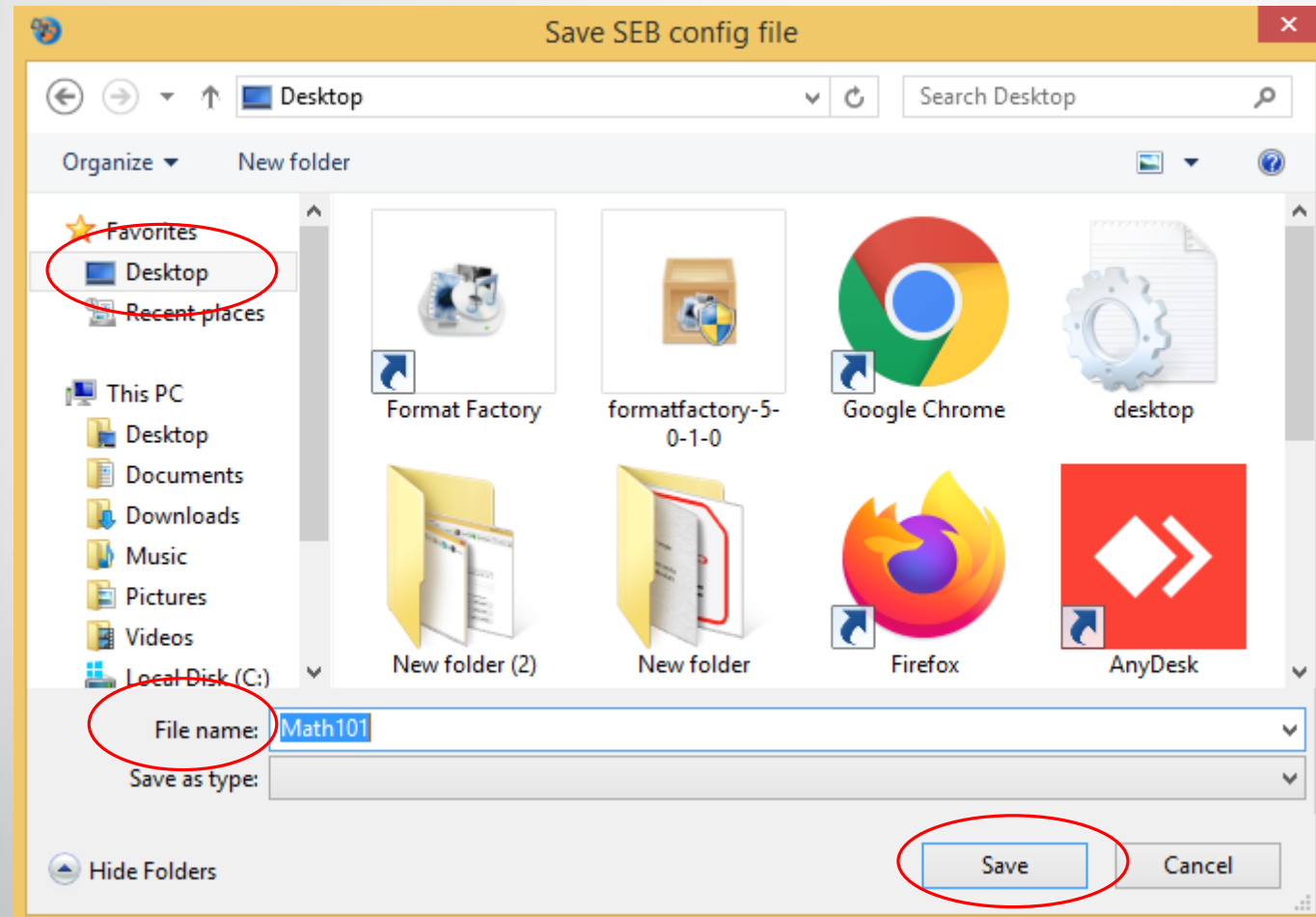
Every instructor must create two configuration files for each exam to meet the operating system related to the students devices (windows or Mac). In order to do this go to the applications tab where you can create the two config files by clicking on the selected process OS field.




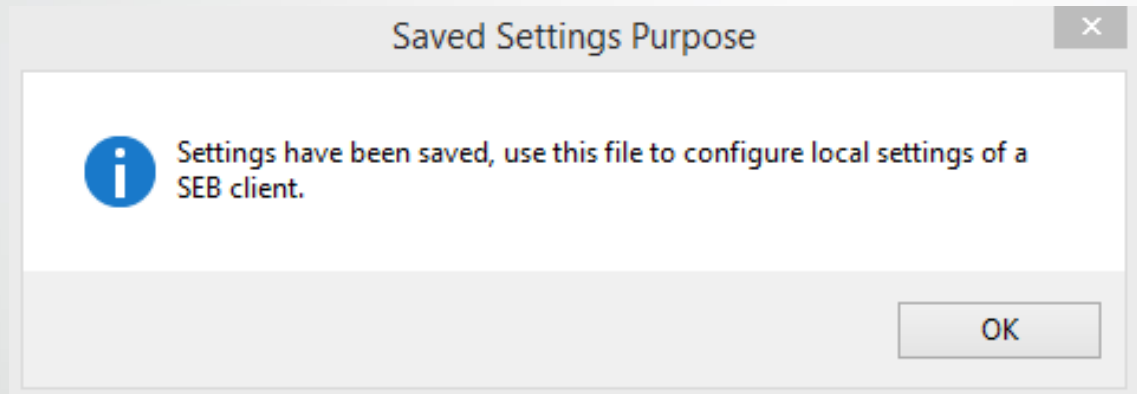
➤ Step #7: Press Config file tab → click on save setting as



- Step # 8: choose the folder to save the file in it (i.e. desktop) and rename the file as same as the course name (i.e. Math101)



➤ Step #9: A message to confirm that the setting have been saved appears  Click Ok.



- Step # 10: Close the SEB config tool.
- Step #11: Send the config file (i.e. Math101) to the students at the exam time.



Good Luck 😊